



TESTING
ASSEMBLY

Unlocking value through ATDD & UX

Testing Assembly 27.11.24

Vilma Pohjonen

Eficode



Acronyms!?

“UX, ATDD, XYZ...
That's my cue to exit!”

User **eX**perience

Acceptance
Test
Driven
Development



Lessons from my favorite DIY Masters

**How to roast a
frozen chicken?**



Pat & Mat

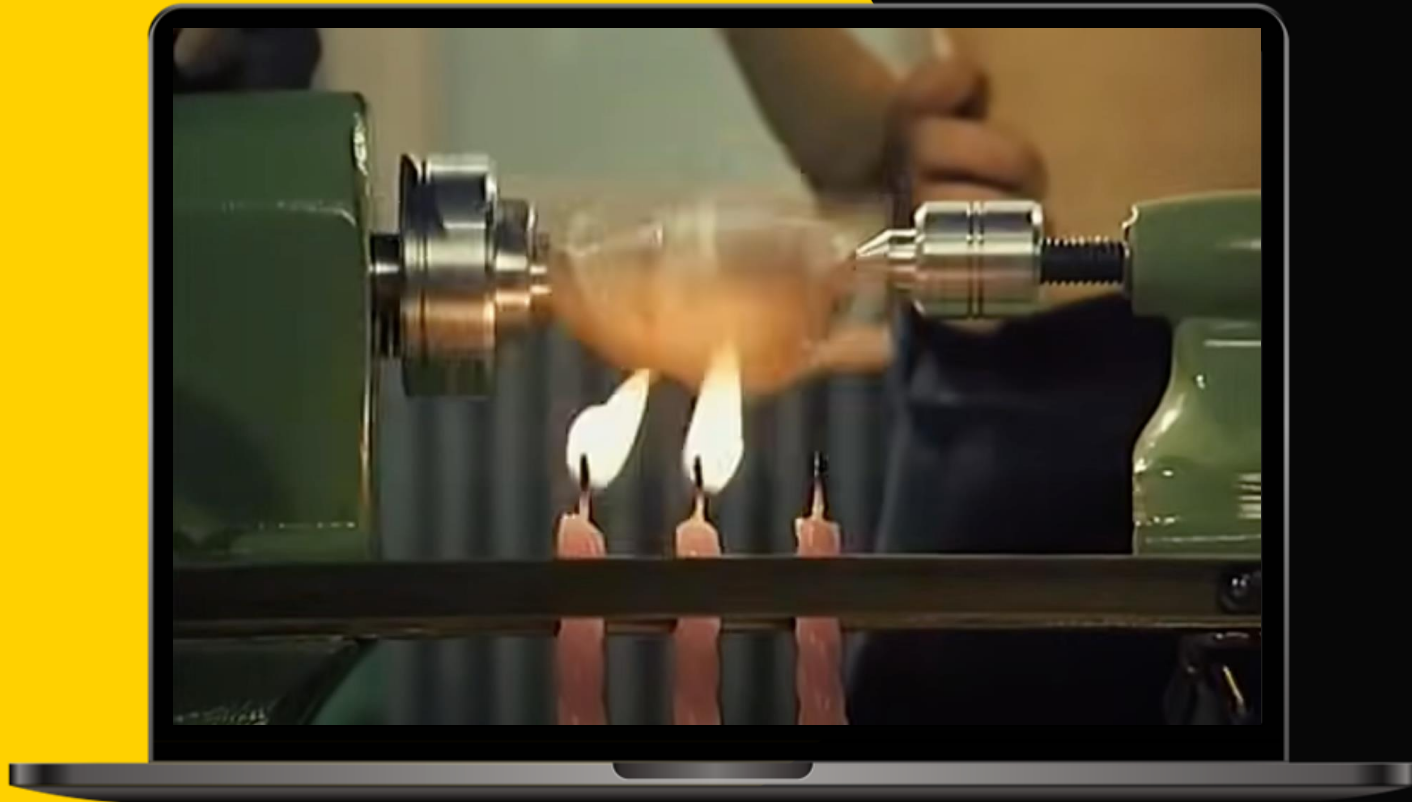
Attempt #1

eficode



Attempt #2

eficode



Attempt #n

eficode



**Users shouldn't
have to invent
DIY solutions to
reach their goals**



**We can proactively
understand their
needs and deliver
solutions directly**



Who am I?

eficode

Advisor & Coach @ Eficode



MSc. Human-Technology
Interaction



ATDD & UX advocate



Avid concert-goer



Travel enthusiast



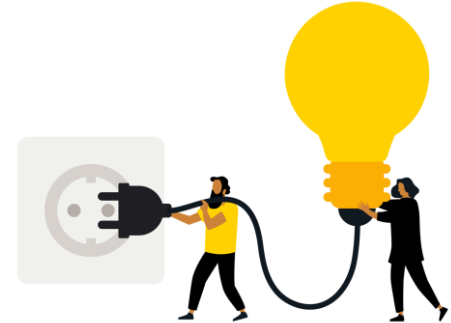
In this talk, I'll explore how we can



**Prioritize user needs
from the start**



**Engage teams in
meaningful
collaboration**



**Define clear
scenarios
to focus on value**

TIP #1

**Seek to
understand!**

When your end-user is out of sight, your product's true value might be out of reach

eficode



**Collect Insights
from**

Interviews

Feedback

Requests

Observations

...

To Understand

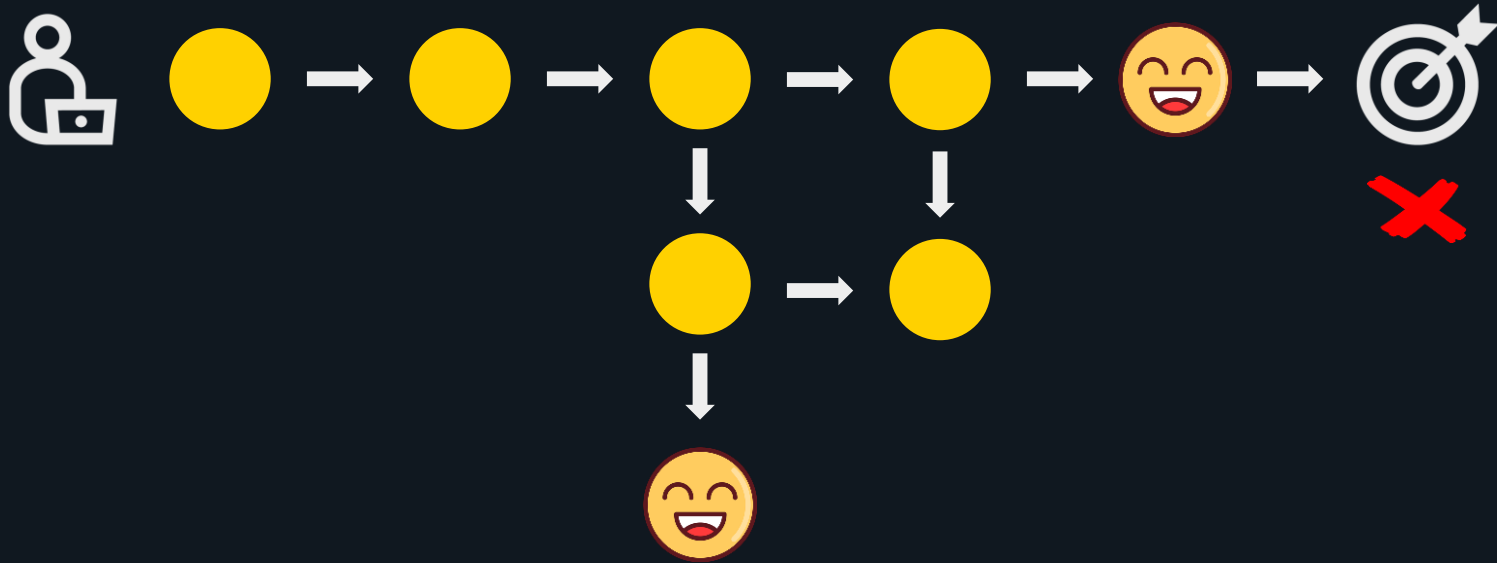
Pains

Needs

Tasks

Goals

Why context matters?



I want coffee!



Brew coffee remotely

As a busy consultant,

I want to be able to start brewing coffee remotely from my phone,
so that I can have a fresh cup waiting when I reach the kitchen

The coffee journey



Before meeting

During meeting

After meeting



TIP #2

**Have
conversations!**

**YES,
a conversation
requires more
than one person**



Zoom in on a journey step



Before meeting

During meeting

After meeting



Schedule brew in advance

As a busy consultant,

I want to be able to schedule the brew in advance,

so that I can keep up with my busy schedule

What IF?

... maintenance window overlaps with the schedule?

?

?

... user doesn't confirm the schedule and closes the app?

... several users try to schedule the brew to start at the same time?

... device loses connectivity while scheduling the brew?

... user wants to reschedule the brew?

?

**Not just
functionality,
but what about**



Usability

Compliance

Security

Performance

Reliability

Accessibility

TIP #3

Slice and dice!

Identify key scenarios

What if user wants to reschedule the brew?

Allow rescheduling before the brew start

What if several users try to schedule the brew to start at the same time?

Notify users of the conflict and offer the next available time slots

What if maintenance window overlaps with the schedule?

Show user only time slots that are available

Define a scenario

Scenario: Reschedule the brewing time

Given the user has already scheduled a brew

When the user changes the scheduled brew to a new time

Then the brewing schedule is updated accordingly

Description

Prerequisites

User actions

Expected outcome

Apply to any type of scenario

Scenario: Provide an accessible notification

Given

the user has accessibility settings enabled on their device

When

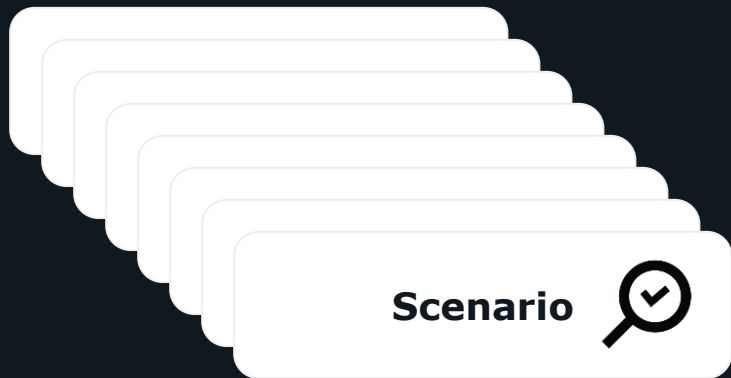
a notification is triggered by the system

Then

the system should deliver the notification according to the user's accessibility settings



Accept with confidence



How do we turn insights into real product value?



Discover

Define

Specify





TESTING
ASSEMBLY



Thank you!